

PAUL ANDREW

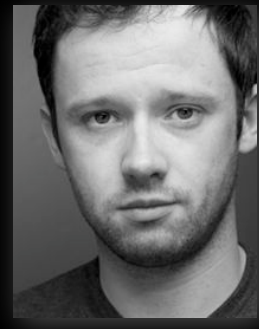
FOCUS PULLER / CAMERA OPERATOR / STILLS PHOTOGRAPHER

62 Glan Seiont
Hendre Park
Caernarfon
Gwynedd
LL55 2DX

MOBILE 07971 374 584

EMAIL paulandrew@dsl.pipex.com

SKYPE paulandrew1



2000 Skillset NVQ LEVEL 2: CAMERA ASSISTANCE

2001 Skillset NVQ MA LEVEL 3: CAMERA OPERATIONS – Awarded By Lord David Puttnam at BAFTA, LONDON

2001 UK Full Driving Licence

- **“PENGELLI” (Series VI, VII and VIII)**
Drama. As Camera Assistant **Nant Films**
- **“PAM FI, DUW?” (Series V)**
Drama. As Focus Puller **HTV**
- **“TALCEN CALED” (Series II, III, IV and V)**
Drama. As Focus Puller **Nant Films**
- **“Y STAFELL DDIRGEL”**
Drama. As Camera Assistant **HTV / Llifon**
- **“Y TŴR”**
Drama. As Camera Assistant **BBC Wales**
- **“PROMO MILENIWM S4C” (1.85:1)**
Promo by S4C Marketing dept. – As Second Camera Assistant, 35mm Arriflex 435 **S4C Promo**
- **“LABOUR CONFERENCE 2002”**
As Camera Operator **BBC News**
- **“DIRGELWCH YR OGOF”**
Film. As Focus Puller **Nant Films**
- **“PORC PEIS BACH” (Series IV, V and VI)**
Drama. As Focus Puller **Cambrensis**
- **“MONARCHY”**
Documentary with David Starkey - As Camera Assistant **Granada Media / Channel 4**
- **“AMDANI” (Series IV, V and VI)**
Drama. As Focus Puller **Nant Films**
- **“MELA”**
Film. As Focus Puller **Nant Films**
- **“EMYN ROC A RÔL” - Special**
Film. As Focus Puller **Ffilmiau Eryri**
- **“CAERDYDD” (Series II, III, IV and V)**
Drama. As Focus Puller – Shot in HD on Panasonic HDX400 **Fiction Factory**
- **“CWCW”**
Film. As Focus Puller – Shot in HD on Sony 900R / Transferred to 35mm for Theatrical Release **Fondue Films**
- **“MARTHA, JAC A SIANCO”**
Film. As Focus Puller – Shot in HD on Sony 790 / Transferred to 35mm for Theatrical Release **APOLLO**
- **“THE LUNCH BREAK”**
Short Film. As Director and Camera Operator – Shot in HD on Panasonic HDX400 **Fiction Factory**
- **“BLODAU”**
Drama. As Focus Puller – Shot in HD on Sony 790 **Cwmni Da**
- **“A CHILD’S CHRISTMASSES IN WALES”**
Film. As Focus Puller – Shot in HD on Sony 900R **BBC**